

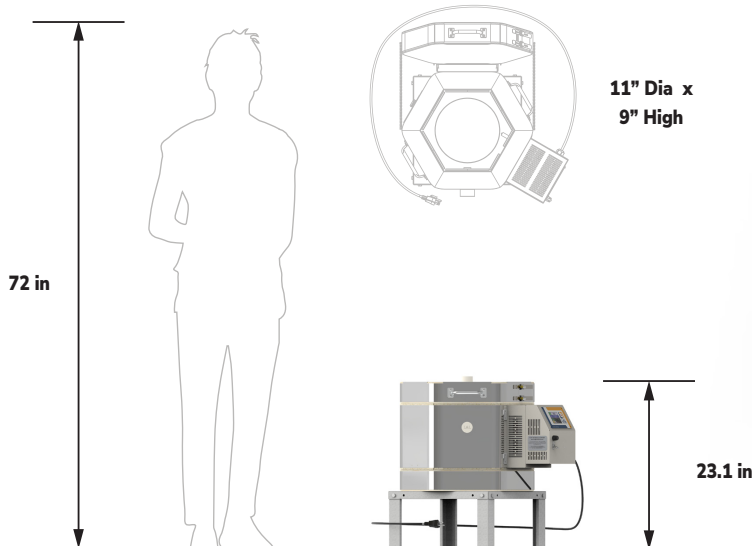
DLH11-DX

Temperature Rating: Cone 10

Volume: 0.5 Cubic Feet

Brick Thickness: 2-1/2" Brick, 3" Top & Bottom

Inside: 11" Dia x 9" High



Small test and craft kilns that can run on 120 volts or low-amperage 208-240-volt circuits. These are great for beginning potters or for testing glazes.

- **Genesis Mini Touch Screen Control** • with Kiln Aid app
- **Hard Ceramic Element Channels** • protect your elements and kiln
- **Cone 5 to Cone 10** • depends on voltage and amps
- **Type K Thermocouple (1)** • with protection tube
- **2.5" Sides, 3" Lid/Bottom** • K23 Brick
- **Top Loading**
- **Solid, Straight-View Peephole Plug**
- **Full-Support Stand**
- **Easy-Access Control Panel** • with Easy-View tilted display
- **Three-Year Limited Warranty**
- **c-MET-us** listed to UL499 Standards
- **See hotkilns.com/DLH11 for all features and options**

GENERAL DIMENSIONS



Scan OR Visit:
hotkilns.com
/DLH11-GD

Hard Channels



Protect Your Brick

TRUST YOUR KILN
hotkilns.com

Manufactured in Swedesboro, NJ
800-750-8350 • sales@hotkilns.com

Bulletin No: BL-DLH11-DX REV: 0

Page 1

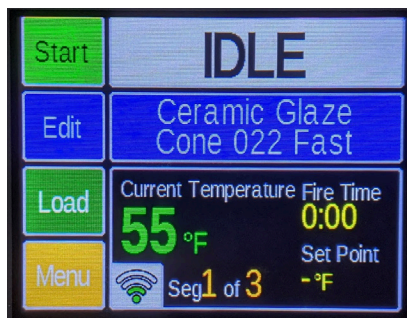


Electrical Specifications for DLH11

USA

WORLD

Model Number	Part Number	Volt/ Phase	Watts	Cone Rating	Amps	Wire Size	Fuse Size	Control	Power Cord
DL11-DB	K-D-DL1B/10	120/1P	1,800	5	15.0	14 ga	20 Amps	DynaTrol	15 Amp, 120V, NEMA 5-15, 6 foot
DL11-D	K-D-DL1D/10	120/1P	1,800	5	15.0	14 ga	20 Amps	DynaTrol	15 Amp, 120V, NEMA 5-15, 6 foot
DLH11-D	K-D-DLHD/10	120/1P	2,160	6	18.0	12 ga	25 Amps	DynaTrol	20 Amp, 120V, NEMA 5-20, 6 foot
DLH11-DX-240	K-D-DLHD/31	240/1P	2,800	10	11.7	14 ga	15 Amps	DynaTrol	20 Amp, 240V, NEMA 6-20, 6 foot
DLH11-DX-208	K-D-DLHD/21	208/1P	2,800	10	13.5	12 ga	20 Amps	DynaTrol	20 Amp, 240V, NEMA 6-20, 6 foot
DLH11-DX-220	K-D-DLHD/41	220/1P	2,800	10	12.7	14 ga	20 Amps	DynaTrol	Varies with country or no cord



Control: Full digital touchscreen Genesis Mini control with easy-to-use interface, WiFi enabled app, and simple programs for firing ceramics. **UL Listing:** c-MET-us listed to UL499 standards.

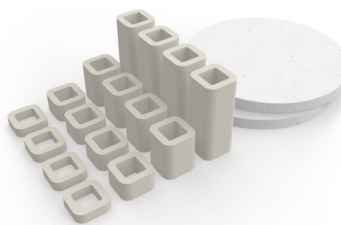
Wiring Diagrams: See **the Electrical Tab** for each kiln model to get the wiring diagram for each voltage.

NOTE: The 120 volt versions should not be used for high production (more than once a week) to their maximum temperature range - the element life will not be acceptable under those conditions. 208 volt and 240 volt versions are rated to Cone 10 under high production conditions.

Moving and installation: It comes packed in a skidded carton with secure foam-in-place packaging.

Shipping Weights Dimensions: See hotkilns.com/DLH11 for shipping dimensions with various combinations of options.

All Features and Options: See hotkilns.com/DLH11



FURNITURE KIT FOR Doll/Test Kilns

Part Number: H-D-KDHL/00

Includes: Two 9" (22.9 cm) full round shelves, one post kit with four each 1/2", 1", 2", & 4" high 1-1/2" square posts

TRUST YOUR KILN
hotkilns.com

Manufactured in Swedesboro, NJ
800-750-8350 • sales@hotkilns.com

Bulletin No: BL-DLH11-DX REV: 0

Page 2

