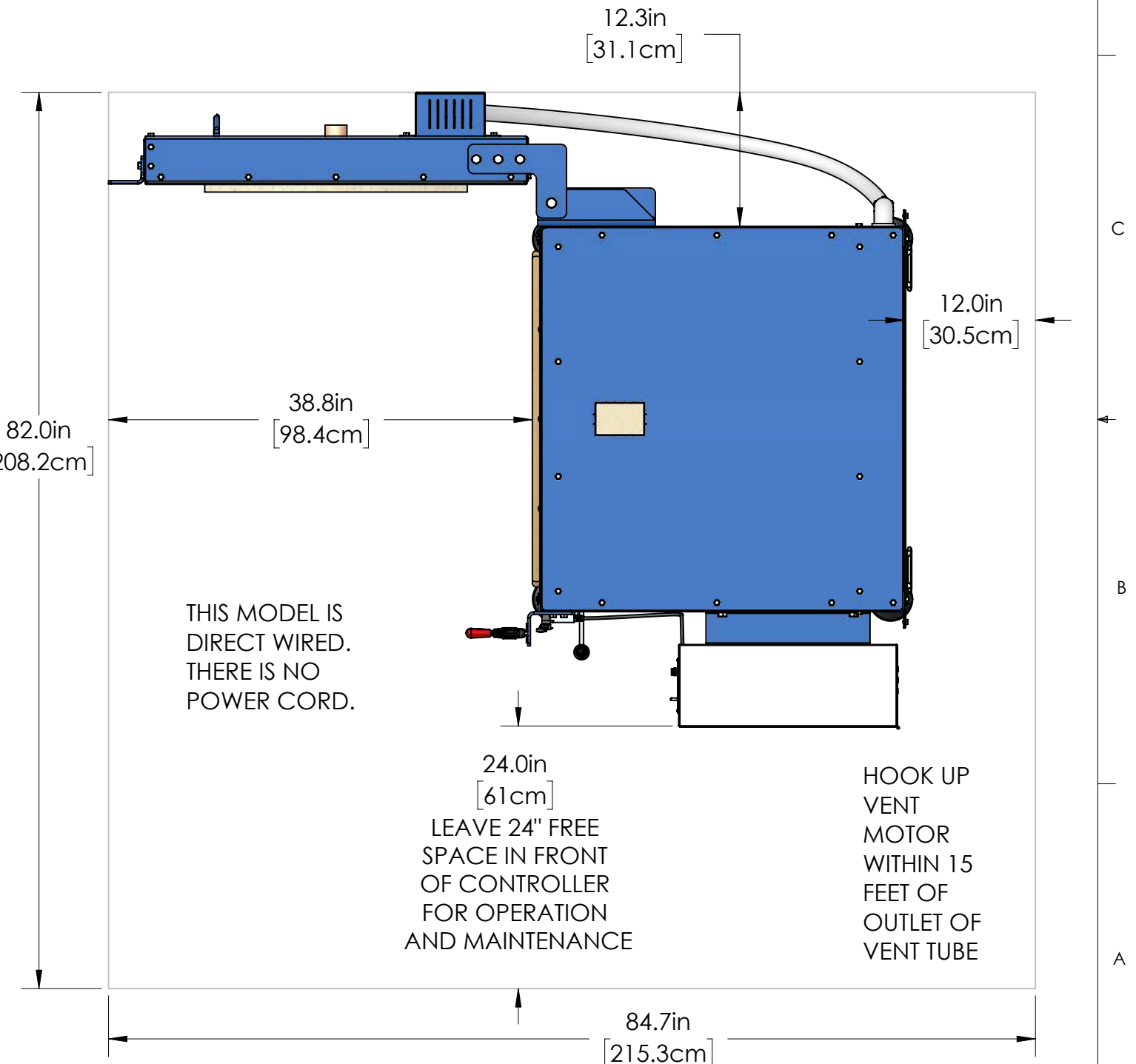
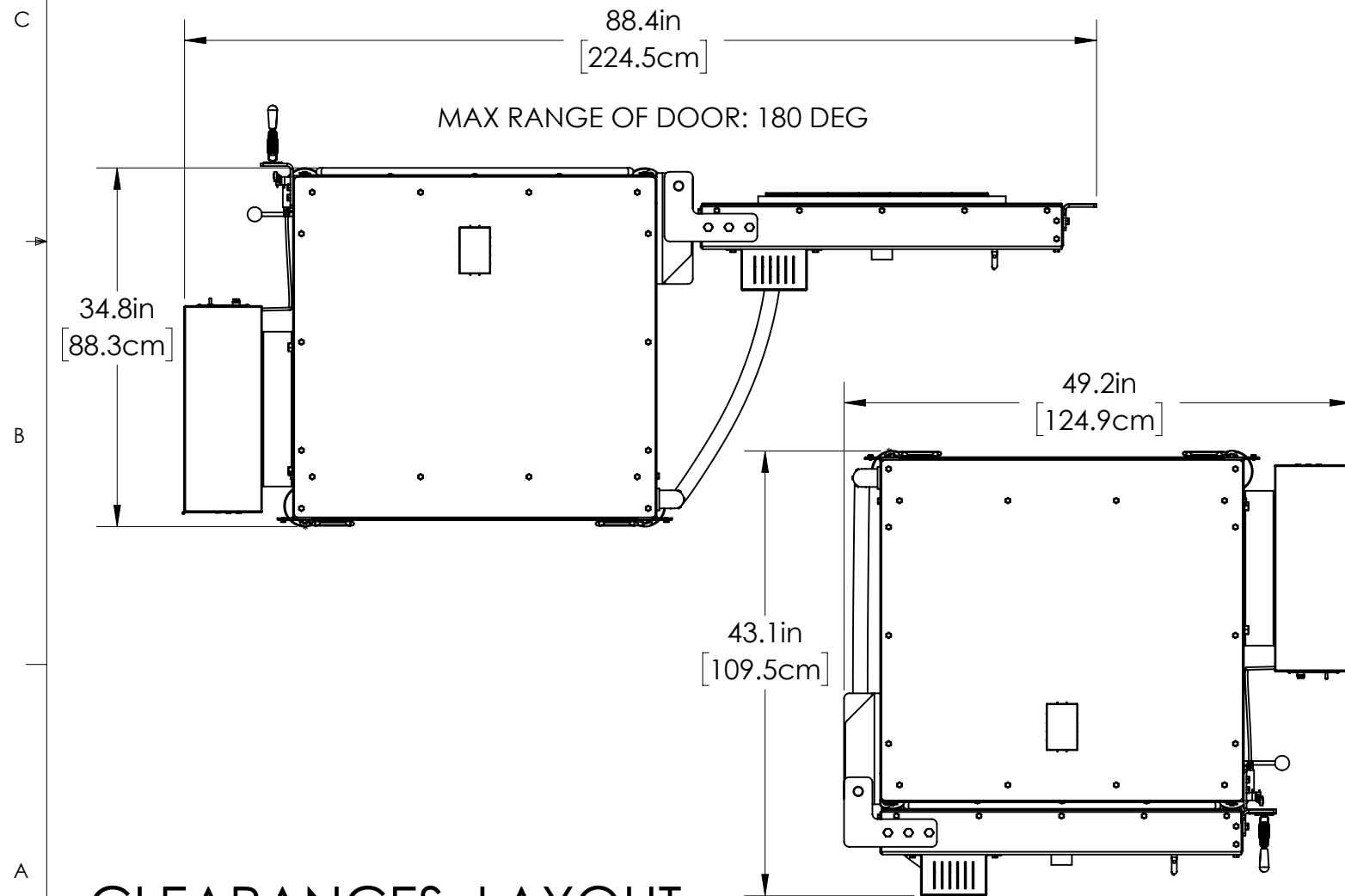


1. **WALL/KILN SPACING:** 12" [30.5cm] SPACING BETWEEN SIDES OF KILN AND WALLS OR OTHER OBJECTS. 18" [45.7cm] IS RECOMMENDED. LEAVE AT LEAST 18" [45.7cm] BETWEEN TWO KILNS.
2. **AMBIENT VENTILATION:** TO CALCULATE REQUIREMENTS, SEE hotkilns.com/calculate-kiln-room-ventilation.
3. **KILN VENTILATION:** L&L VENT-SURE KILN VENT RECOMMENDED FOR SAFETY AND LONGER ELEMENT LIFE. OPTIONAL CONTROL ALLOWS VENT TO BE TURNED ON AND OFF WITH CONTROL.
4. **OTHER INFO:** REFER TO INSTALLATION INSTRUCTIONS AND CAUTIONS INSTRUCTIONS FOR OTHER REQUIREMENTS AND SAFETY INFORMATION. REFER TO WIRING DIAGRAM FOR ELECTRICAL HOOKUP INFORMATION.
5. **MAX LOAD WEIGHT:** SEE hotkilns.com/load-weight.
6. **WEIGHT OF KILN:** 1365 LBS [619 KG]
7. **WEIGHT OF KILN WITHOUT DOOR:** 1125 LBS [510 KG]
8. **WEIGHT OF DOOR:** 240 LBS [109 KG]

- TO MOVE KILN THROUGH A NOMINAL 36" DOOR:**
1. REMOVE DOOR CLAMPS/BRACKETS FROM CASE
 2. TURN KILN SIDWAYS



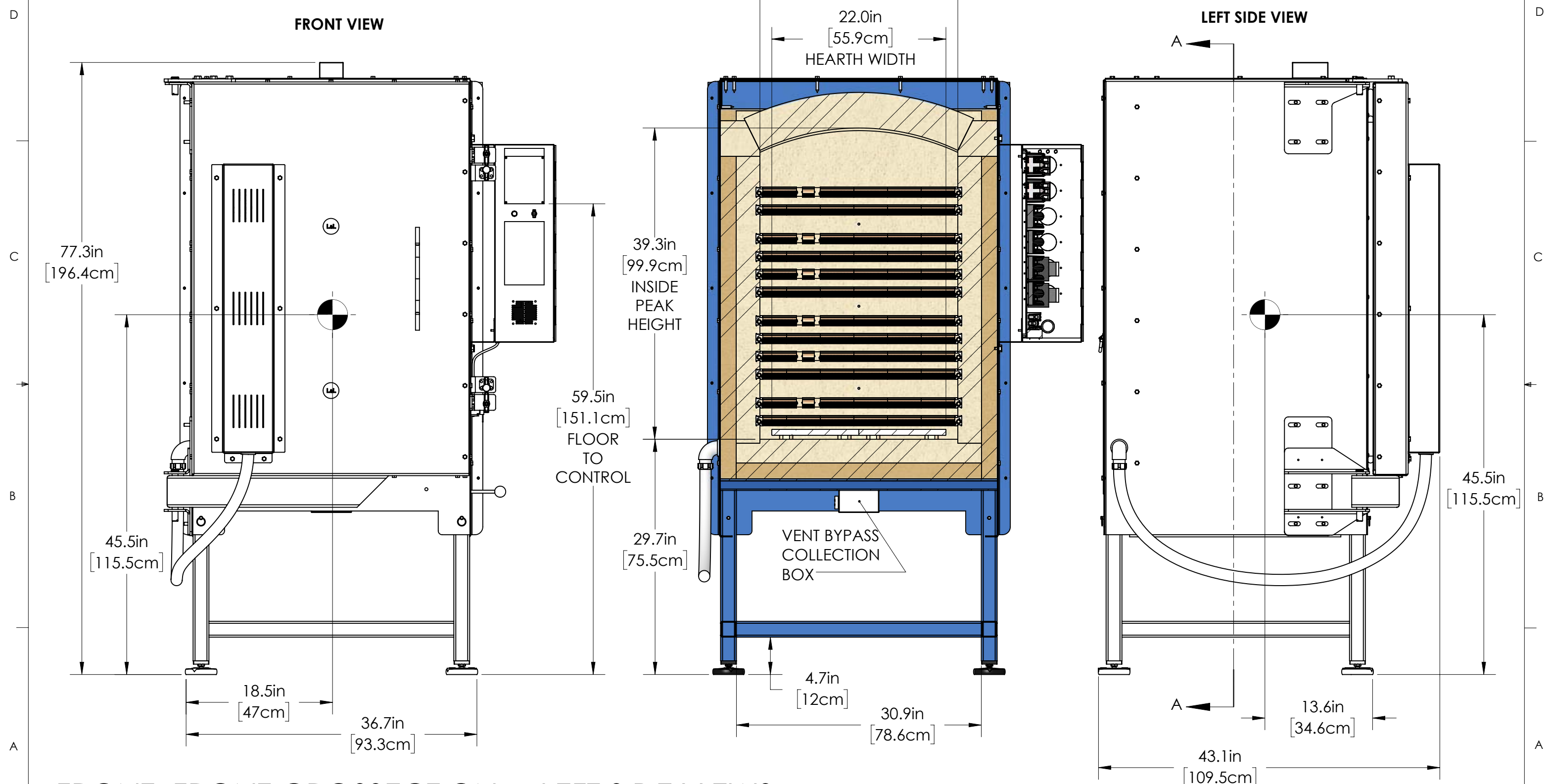
THIS MODEL IS DIRECT WIRED. THERE IS NO POWER CORD.

LEAVE 24" FREE SPACE IN FRONT OF CONTROLLER FOR OPERATION AND MAINTENANCE

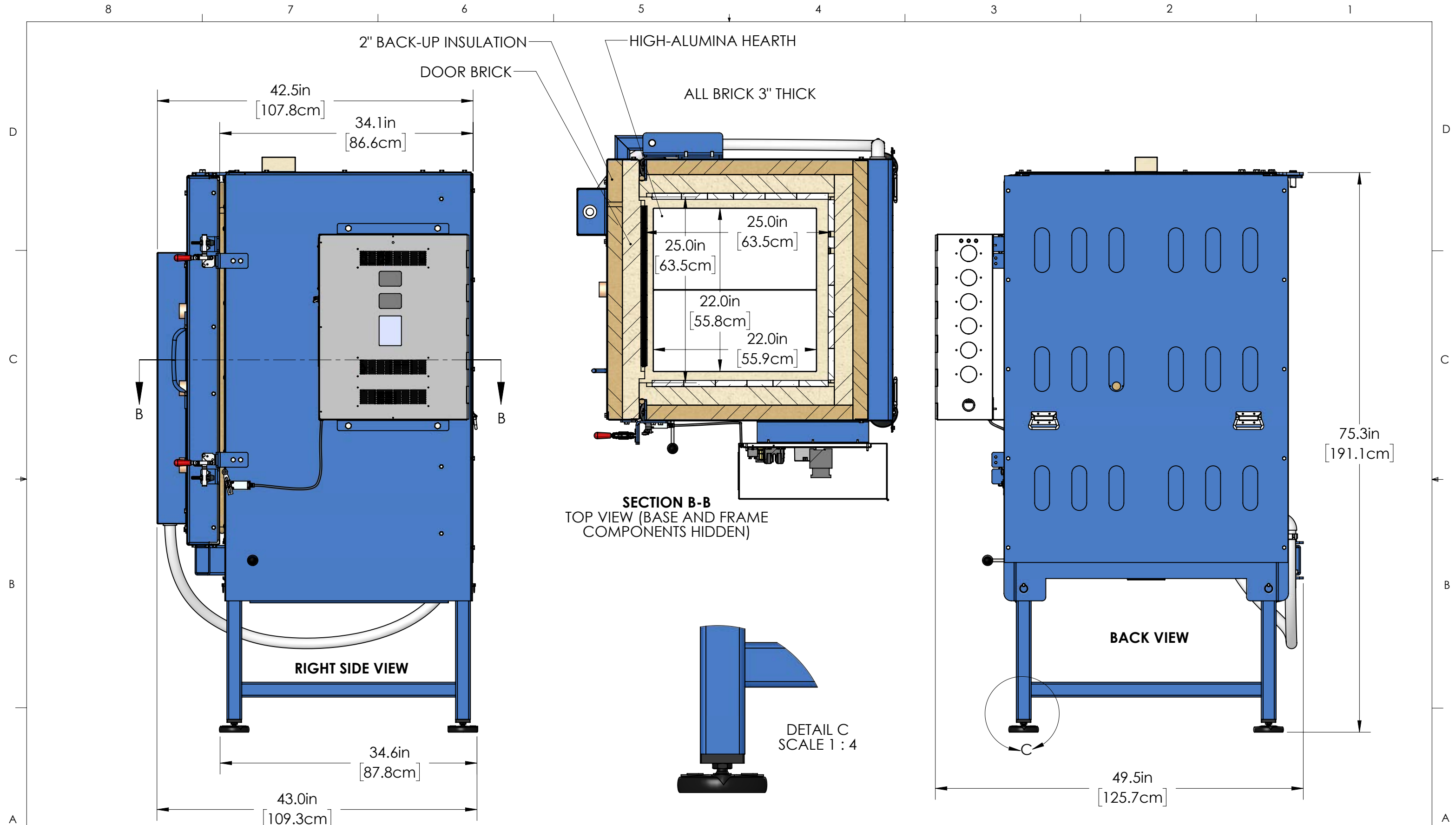
HOOK UP VENT MOTOR WITHIN 15 FEET OF OUTLET OF VENT TUBE

CLEARANCES, LAYOUT & INSTALLATION


CENTER OF MASS IS SHOWN WITH ROUND CROSS SYMBOLS. KILN COULD TIP OVER IF CENTER OF MASS BECOMES VERTICAL ABOVE ONE EDGE OF KILN BASE. THIS COULD CAUSE SERIOUS INJURY.

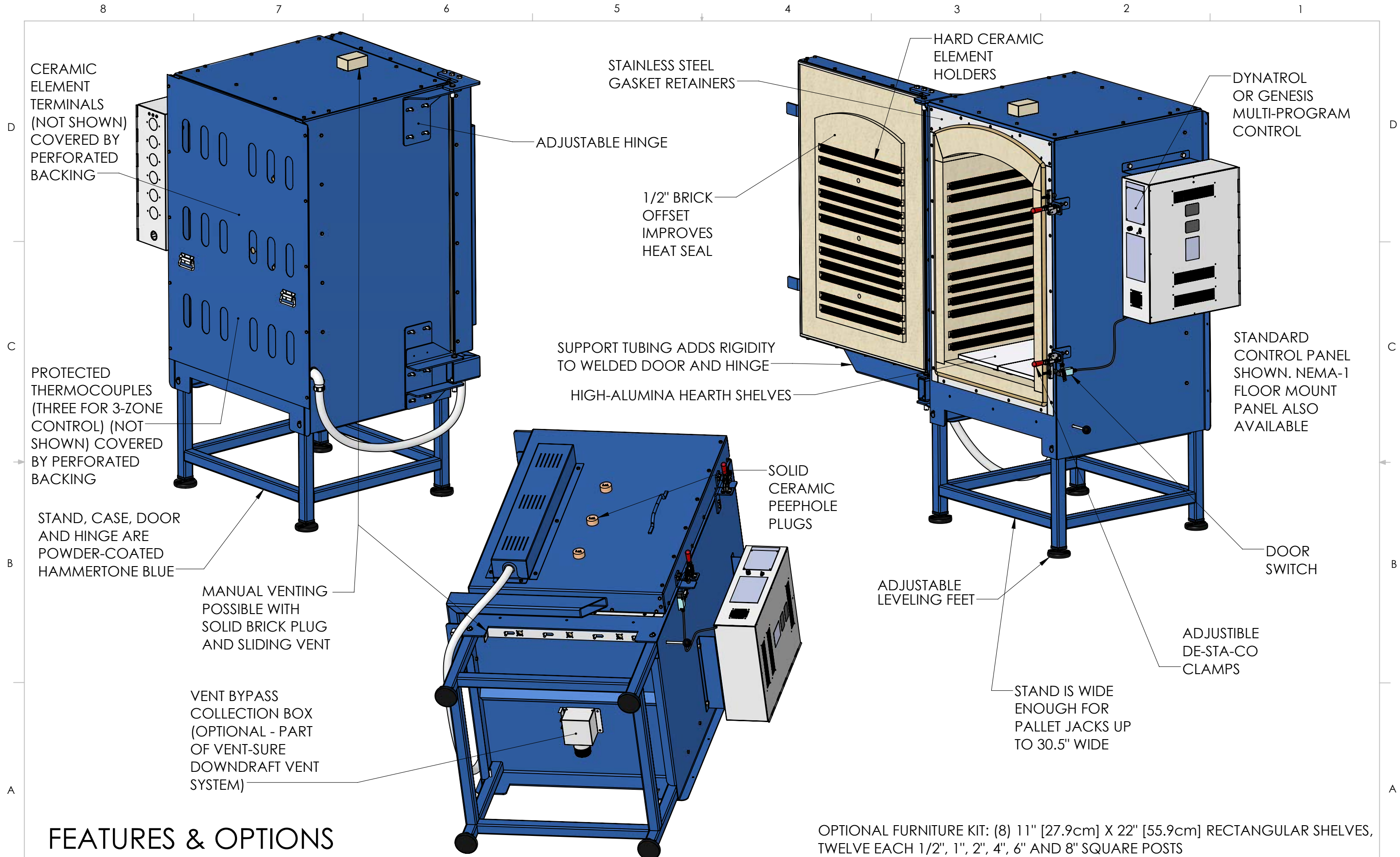


FRONT, FRONT CROSSECTION & LEFT SIDE VIEWS



RIGHT SIDE, TOP CROSS-SECTION, AND BACK VIEWS

THE INFORMATION CONTAINED IN THIS DRAWING IS THE SOLE PROPERTY OF L&L KILN MFG INC. ANY REPRODUCTION IN PART OR AS A WHOLE WITHOUT THE WRITTEN PERMISSION OF L&L KILN MFG INC. IS PROHIBITED.		DRAWN BY DSL	DATE 04/15/20	SCALE 1:12	TITLE EL2436 (3" BRICK) GENERAL DIMENSIONS	 PH: (856) 294-0077 FAX: (856) 294-0070	REV B	SHEET OF 3/4	DRAWING NO. 10000-3
---	--	-----------------	------------------	---------------	---	---	----------	-----------------	------------------------



THE INFORMATION CONTAINED IN THIS DRAWING IS THE SOLE PROPERTY OF L&L KILN MFG INC. ANY REPRODUCTION IN PART OR AS A WHOLE WITHOUT THE WRITTEN PERMISSION OF L&L KILN MFG INC. IS PROHIBITED.

DRAWN BY: DSL
 DATE: 04/15/20
 SCALE: 1:15
 TITLE: EL2436 (3" BRICK) GENERAL DIMENSIONS

EL2436 (3" BRICK) GENERAL DIMENSIONS



PH: (856) 294-0077
 FAX: (856) 294-0070

REV: B
 SHEET OF: 4/4
 DRAWING NO.: 10000-3